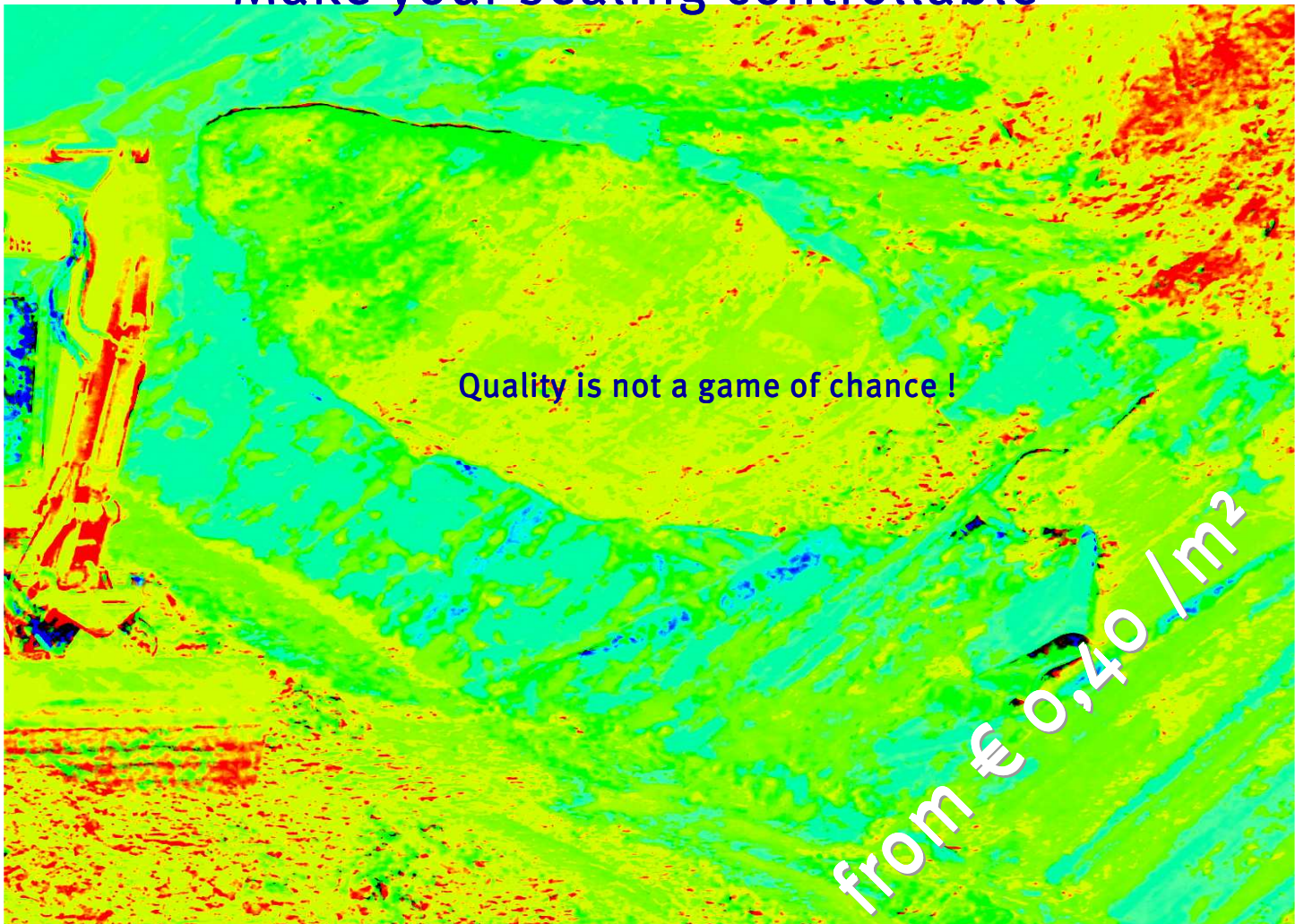




we provide confidence

geologger® cle
the simply clever leak detection system

Make your sealing controllable



Quality is not a game of chance !

from € 0,40 / m²



we provide confidence

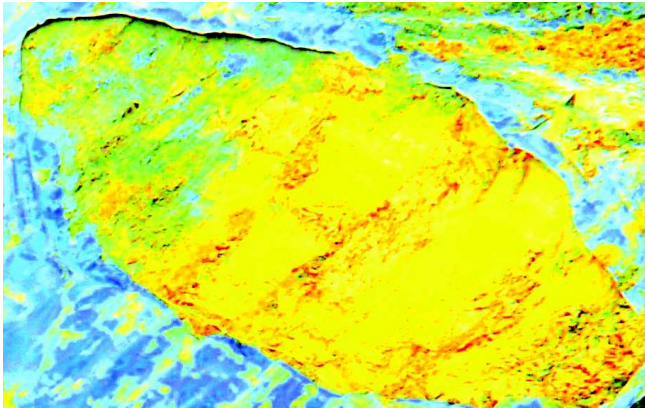
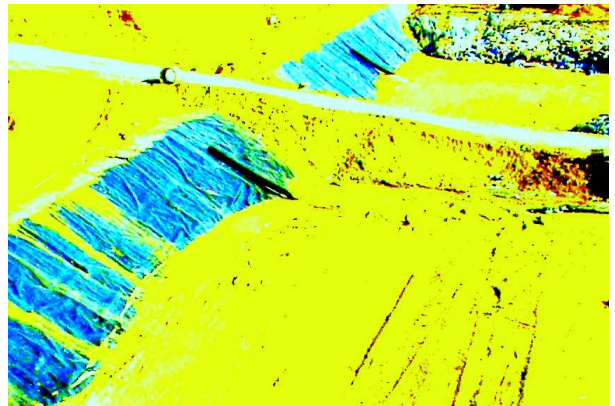
g e o l o g g e r[®] cle

the simply clever leak detection system

Precautions are what you take beforehand

In some projects you are really happy that a sealing control system was installed after the event because you cannot see whether concealed sealing surfaces are impermeable or not.

Unfortunately, you don't know in advance which ones are.



Leave nothing to chance

g e o l o g g e r[®] cle turns any plastic sealing into a controllable sealing and allows you to determine if and where there are any leaks in the sealing with a minimum of work.

All of this from only € 0.40/m².

Quality is measurable – even where no-one can see

You want a proven impervious plastic sealing that you can check for leaks at any time, tomorrow or in 10 or 30 years?

Irrespective of whether 1 m or 50 m of material has been stored on the sealing in the meantime?

And all of this without the extra costs of a fixed-wire leak control system?

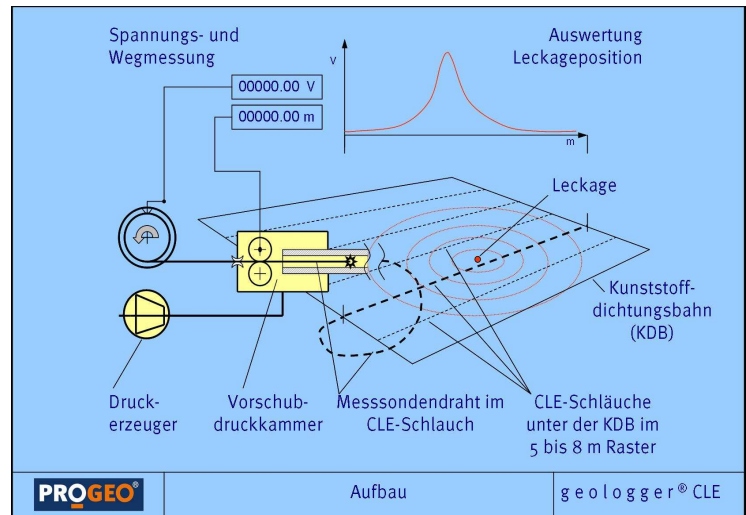
If so, there is no way around equipping your sealing with the g e o l o g g e r[®] cle leak detection system.

A simple idea – cleverly realised

The patented g e o l o g g e r[®] cle is an electro-resistive sealing control system to monitor and locate leaks in underground large-surface sealing. The system is based on tube-like measuring electrodes of conductive polyethylene, so-called Continuous Linear Electrodes, that can be scanned by a mobile measuring device with a measuring probe to measure the potential distribution in the areas of the sealing. The condition of the sealing and location of any leaks can then be determined with great reliability and accuracy from this distribution, as is the case in all electro-resistive leak detection systems.

Advantages over prejudices

- Endless prefabricated linear electrodes of permanently stable polyethylene
- No joins – no weak spots
- Metal-free – no metal conductors, no risk from lightning and overvoltages
- SKZ-expertise confirms a service life of at least 30 years for the CLE electrodes
- High local resolution
- Completely self-testable
- And cheaper than "walk over"



geologger[®] cle does more - costs less

The first endless leak detection system off the reel

We go further

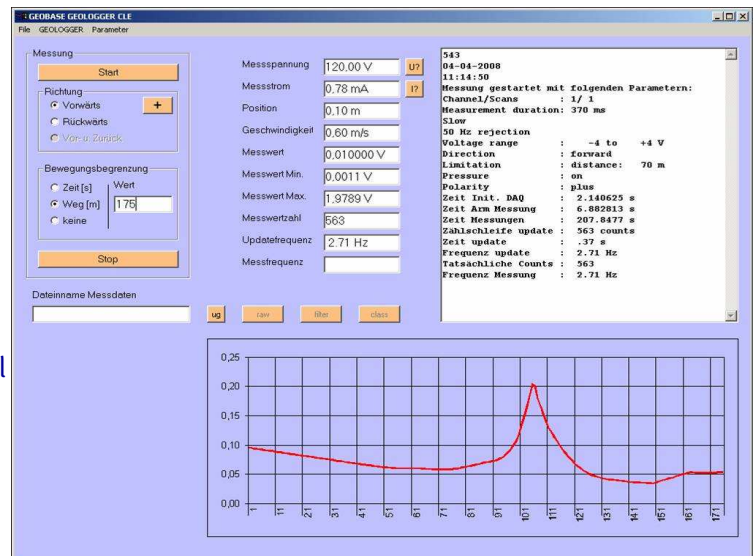
The geologger[®] cle hose system can optionally be used for other measured variables too:

- Settlements
- Expansions
- Temperatures
- Moisture

in the hose direction with practically any local resolution

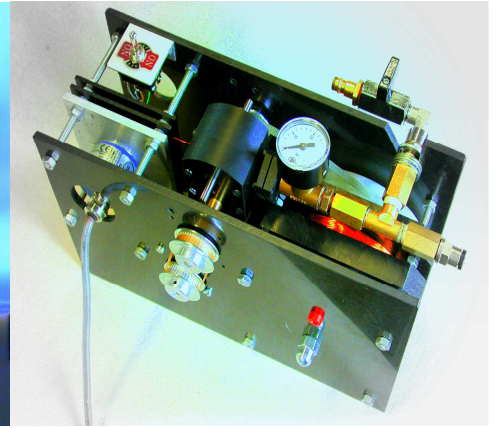
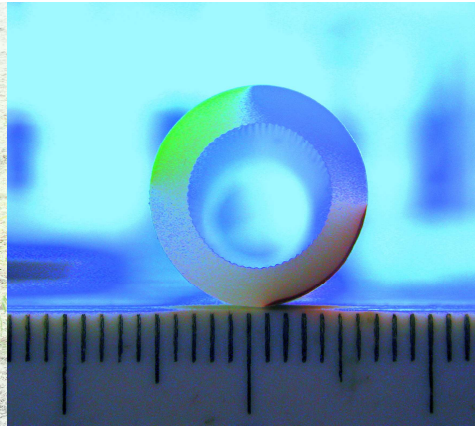
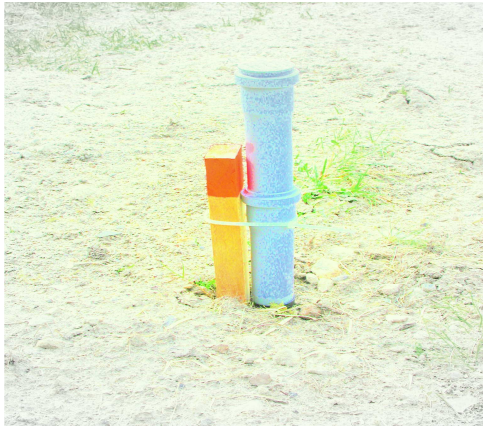
Simply ask for more information:

Phone +49 33701 22-0





we provide confidence



geologger® cle

Electro-resistive leak detection system based on the following permanently installed system components:

- compression-proof linear electrodes of electrically conductive polyethylene, 7x4 mm
 - Reel length up to 5,000 m,
 - Laying interval up to 8 m
- plastic riser pipes with end caps
- VA measuring earth conductors
- carbon fibre feed electrodes
- additional services of PROGEO Monitoring GmbH for measurement and evaluation



Qualität – made in Germany

PROGEO Monitoring has a QM system that is certified according to ISO 9001

Further information

PROGEO Monitoring GmbH
Hauptstraße 2
DE 14979 Großbeeren
Tel: +49-33701-22-0
Fax: +49-33701-22-119
E-Mai: info@progeo.com
www.progeo.com

